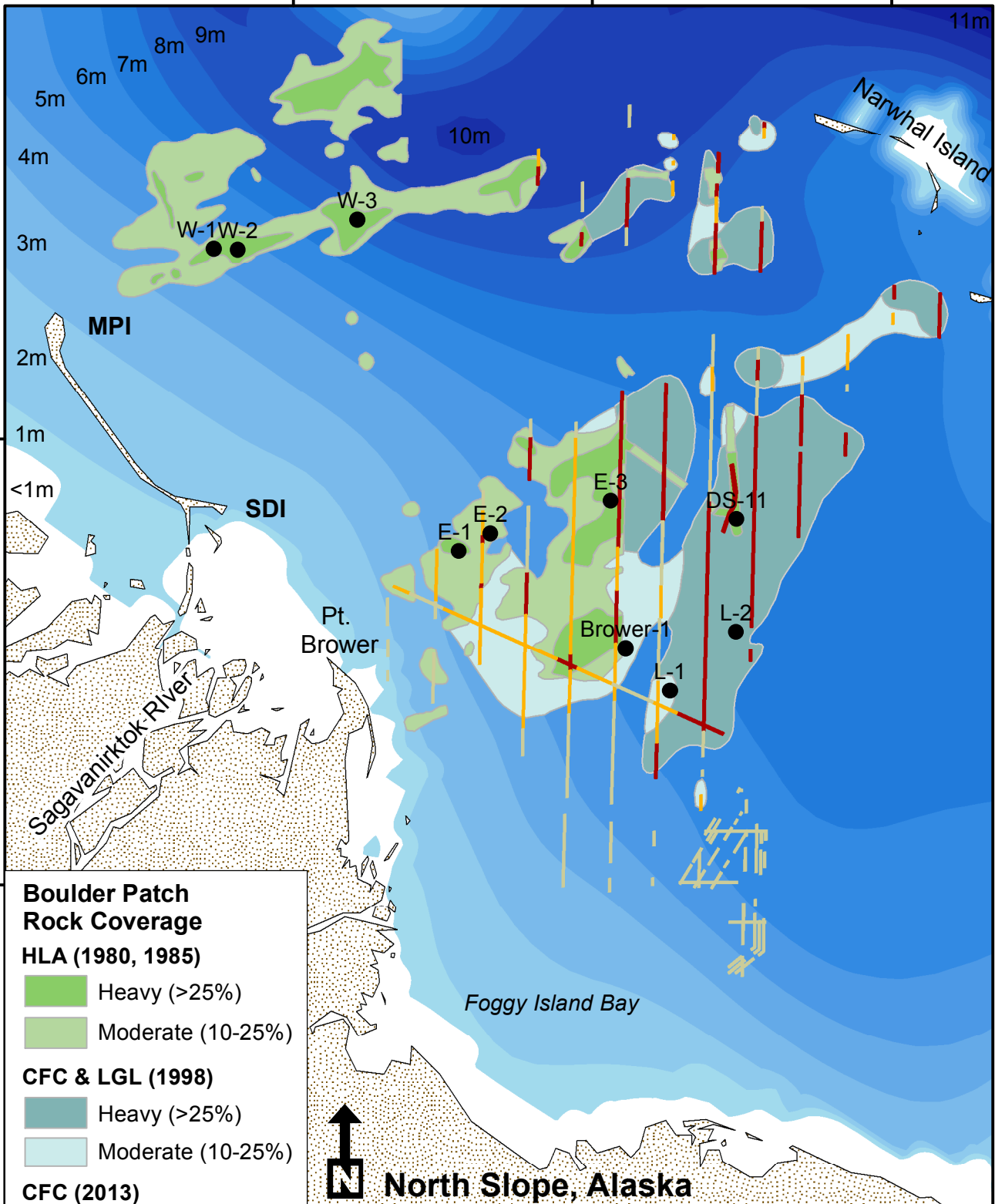


147°50'W

147°40'W

147°30'W

11m



70°20'N

70°15'N

- Boulder Patch  
Rock Coverage**
- HLA (1980, 1985)**
- Heavy (>25%)
  - Moderate (10-25%)
- CFC & LGL (1998)**
- Heavy (>25%)
  - Moderate (10-25%)
- CFC (2013)**
- Heavy (>25%)
  - Moderate (10-25%)
  - Light (<10%)



**North Slope, Alaska**

NAD 1983  
StatePlane Alaska 3

0 1 2 4 6 Kilometers

T. Whiteaker, S.Schonberg, K. Dunton: The University of Texas at Austin