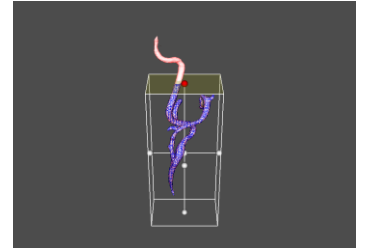
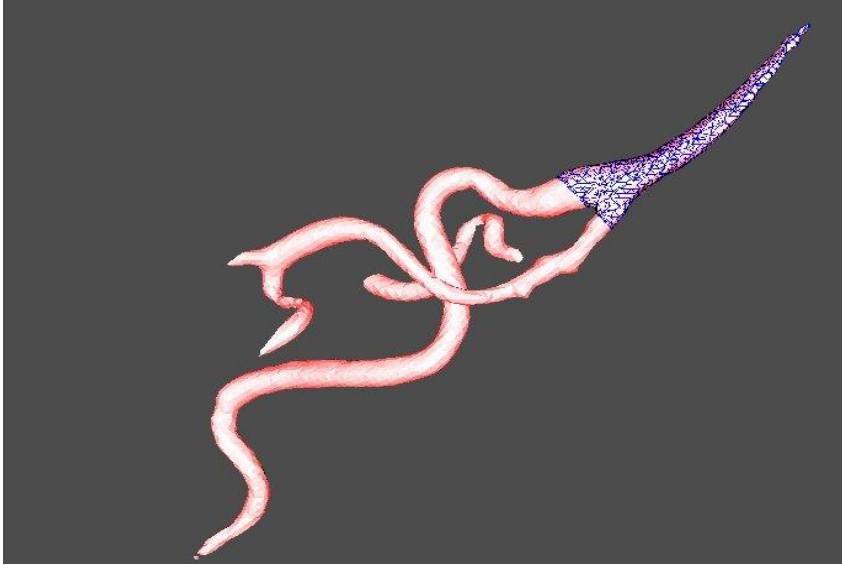


Experiment 1: using a Box Widget, subjects will have to select region of interest as shown in figures below

1. Complexity level – 1 (level1.vtk)

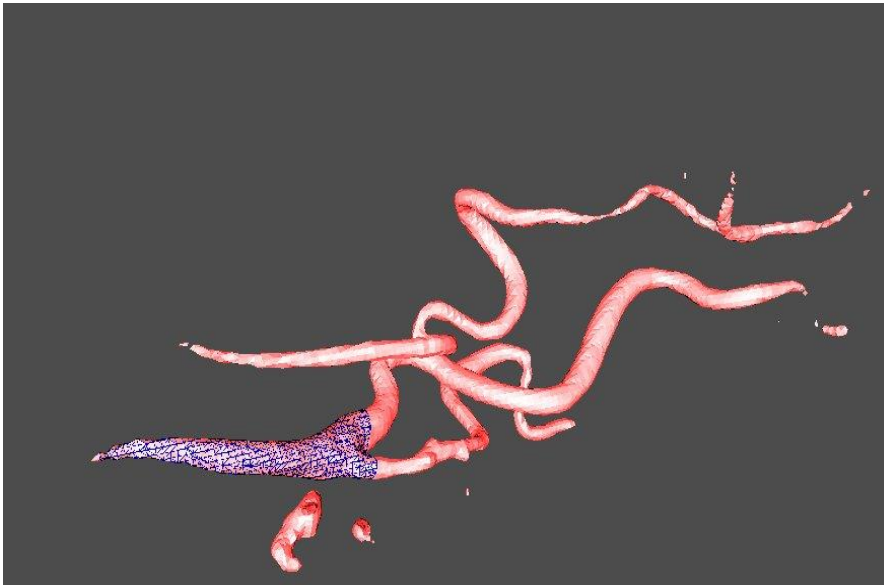


Condition-1: a 2DOF mouse is used for interaction  
Condition-2: a 6DOF glove is used in a 2FOF mouse mode  
Condition-3: a 6DOF glove is used for interaction

Measured variables:

- overall accuracy;
- overall performance;
- rotation time;
- translation time;
- scaling time.

2. Complexity level – 2 (level2.vtk)



3. Complexity level – 3 (level3.vtk)

